

**Wingford Road, SW2**

2 bedroom flat - conversion to let

**£392 Per Week**

Unfurnished

## Property Details

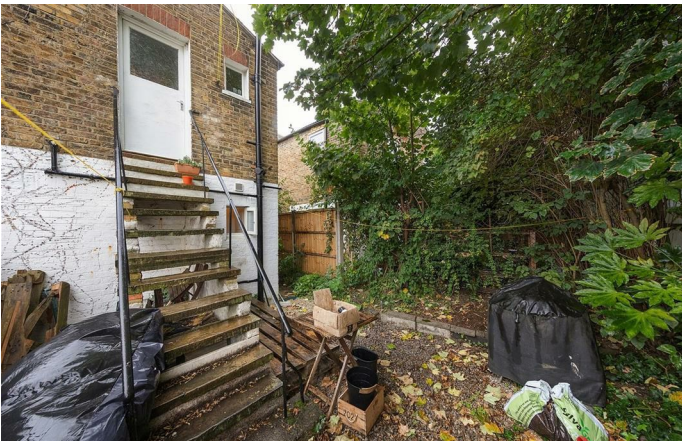
This top floor Victorian conversion offers flexibility in layout as either a one or two bedroom flat depending on your needs. As a one bedroom flat you will enjoy an open plan kitchen with dining space as well as a separate reception room to the front. As a two bedroom flat there are two spacious doubles and the open plan kitchen/diner reverts to a kitchen/reception. There is direct access to the shared garden at the rear of the flat.

## Features

- Shared Garden
- Quiet road
- Open plan kitchen
- One or Two bedroom arrangement

Council tax band C      EPC rating D (58)

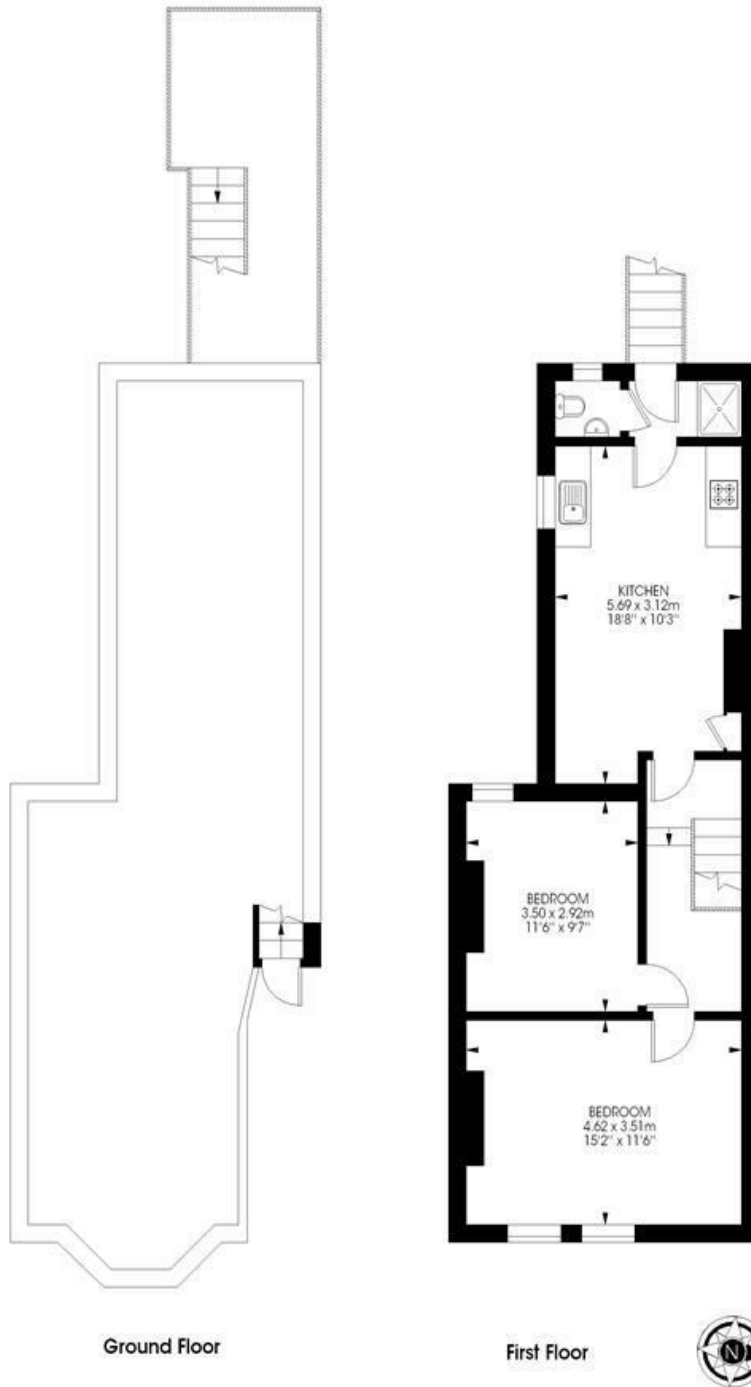




Wingford Road, SW2

Wingford Road,  
Brixton, SW2  
2 bedroom flat

Approximate internal area: 603 sqft / 56 sqm



While we try our very best, floor plans are produced as a guide only and we take no responsibility for the precise accuracy with which any property is represented.



Wingford Road, SW2

